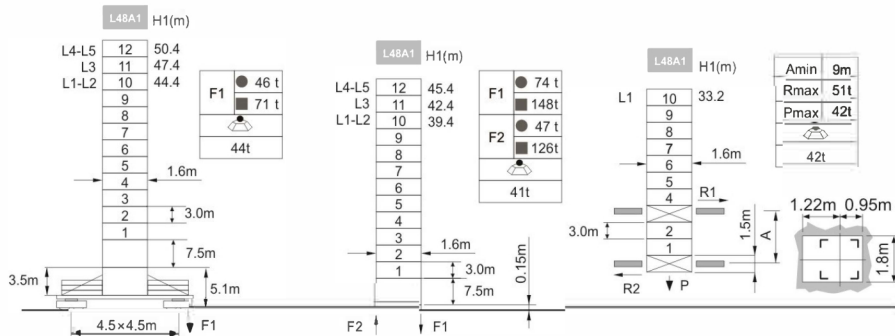


Jib root hinge height



● In service F Reactions ■ Out of service 自重 Without load and ballast with longest jib and maximum height

Load Diagrams

R	falls	R(C _{max})	C _{max}	m	10	12	15	17	20	22	25	27	30	32	35	37	40
40m	☺	3.1-28.9	3.0	t	3.0	3.0	3.0	3.0	3.0	3.0	3.0	3.0	2.8	2.4	2.0	1.8	1.5
	☹	3.1-22.6	4.5	t	4.5	4.5	4.5	4.5	4.5	4.5	3.8	3.3	2.8	2.4	2.0	1.8	1.5
	☹	3.1-18.5	6.0	t	6.0	6.0	6.0	6.0	5.3	4.6	3.8	3.3	2.8	2.4	2.0	1.8	1.5
35m	☺	2.7-30.0	3.0	t	3.0	3.0	3.0	3.0	3.0	3.0	3.0	3.0	3.0	2.6	2.2		
	☹	2.7-23.1	4.5	t	4.5	4.5	4.5	4.5	4.5	4.5	3.9	3.4	3.0	2.6	2.2		
	☹	2.7-18.8	6.0	t	6.0	6.0	6.0	6.0	5.5	4.6	3.9	3.4	3.0	2.6	2.2		
30m	☺	2.2-30.0	3.0	t	3.0	3.0	3.0	3.0	3.0	3.0	3.0	3.0	3.0				
	☹	2.2-23.6	4.5	t	4.5	4.5	4.5	4.5	4.5	4.5	3.9	3.4	3.0				
	☹	2.2-19.2	6.0	t	6.0	6.0	6.0	6.0	5.5	4.6	3.9	3.4	3.0				
25m	☺	1.8-25.0	3.0	t	3.0	3.0	3.0	3.0	3.0	3.0	3.0						
	☹	1.8-23.6	4.5	t	4.5	4.5	4.5	4.5	4.5	4.5	3.9						
	☹	1.8-19.2	6.0	t	6.0	6.0	6.0	6.0	5.5	4.6	3.9						
20m	☺	1.4-20.0	3.0	t	3.0	3.0	3.0	3.0	3.0								
	☹	1.4-20.0	4.5	t	4.5	4.5	4.5	4.5	4.5								
	☹	1.4-19.2	6.0	t	6.0	6.0	6.0	6.0	5.5								

Anchorage

L48A1 塔身高度 Tower body height



※ Over this height please contact us

Mechanisms

☺	30LVF15	☺	m/min	0 ~ 35	0 ~ 70	22kW	350m >350m※
		t	3	1.5			
		☹	m/min	0 ~ 23	0 ~ 46		
☹	30VVF20	☹	t	4.5	2.25	22kW	Hoisting
		☺	m/min	0 ~ 17.5	0 ~ 35		
		t	6	3			
☺	RVF	rpm		0 ~ 0.8	5.5kW	Trolleying	
☺	RT324	m/min		0 ~ 25	2×5.2kW	Luffing	
⚡	380V 50Hz(±5%) 440V 60Hz(±5%)			60kVA	kVA	Slewing	
						Traveling	
						Power	

※ Please consult us △ Option